

Anadigm Inc
2036 N Gilbert Road
MESA, AZ, 85203
USA
Phone +1 480 422 0191
Fax: +1 480 659 3511

1st December, 2019

Minor Package Change Notification. Effective immediately.

To Whom it concerns

Anadigm's primary IC assembly subcontractor suddenly and unexpectedly closed and ceased business. To maintain continuous and uninterrupted supply of FPAA's Anadigm immediately engaged with and transferred to the planned second source assembly plant. From Dec 1st the origin of AN231E04 FPAA shipped from Anadigm is China.

As a result of this change in assembly plant there is a MINOR Change in the package specification, which should have no impact upon your product/PCB assembly. Perhaps it will make soldering the device easier and higher yield.

Summary of package change/difference.

Bottom pad dimension was 5.65mm, new package reduces this to 5.20 mm

Resulting in greater Signal Pad to Bottom Pad separation Old → New
0.275 → 0.50mm

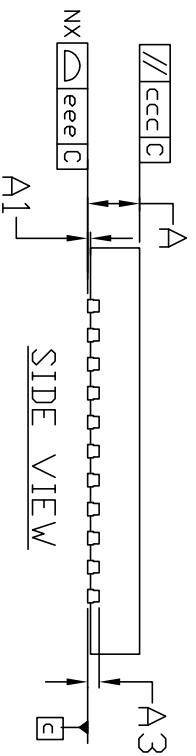
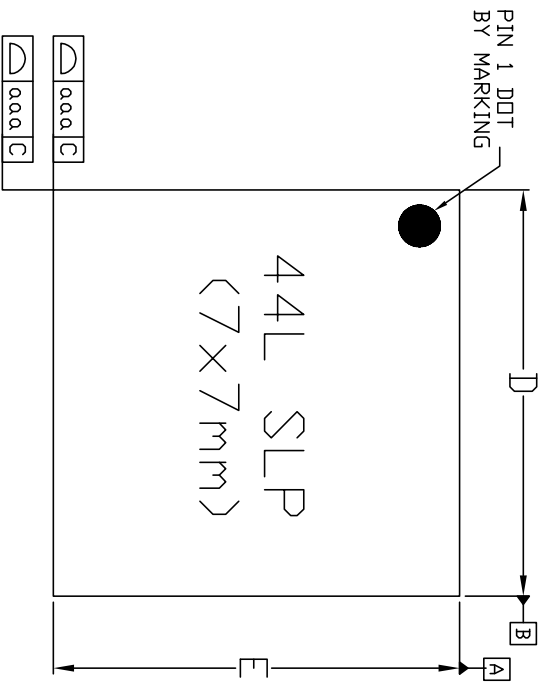
Dimension which remain the same

	Old → New
Signal Pad length	0.40 → 0.40mm
Signal Pad width	0.25 → 0.25mm
Signal Pad to pad distance	0.50 → 0.50mm
Signal Pad separation	0.25 → 0.25mm
Packages Outer dimension	7.00 → 7.00mm

Following two pages are the detailed specification of the two packages.

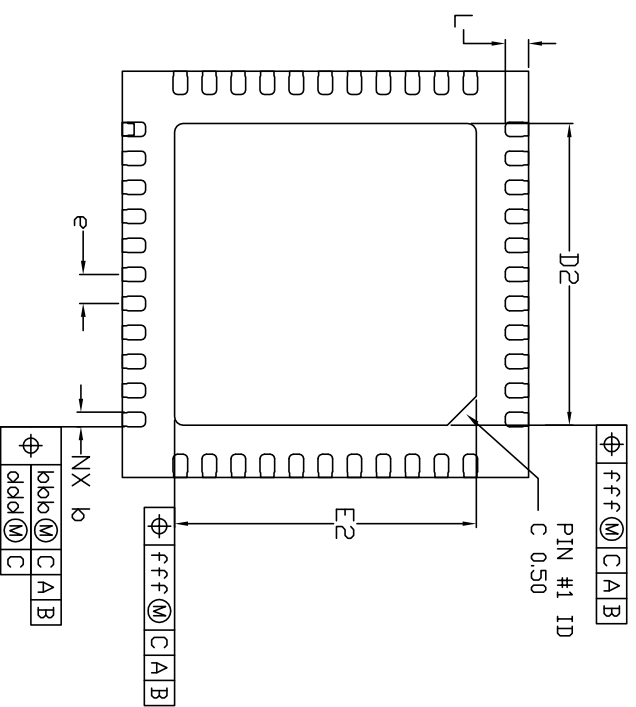


Regards
Simon Dickinson
C.E.O Anadigm Inc
simon.dickinson@anadigm.com



TOP VIEW

BOTTOM VIEW



Dimensional Ref.			
REF.	Min.	Nom.	Max.
A	0.800	0.850	0.900
A1	0.000	---	0.050
A3	0.203 Ref.		
D	6.950	7.000	7.050
E	6.950	7.000	7.050
D2	5.150	5.200	5.250
E2	5.150	5.200	5.250
b	0.200	0.250	0.300
L	0.350	0.400	0.450
e	0.500 BSC		
Tol. of Form&Position			
aaa	0.10		
bbb	0.10		
ccc	0.10		
ddd	0.05		
eee	0.08		
fff	0.10		


Notes

1. ALL DIMENSIONS ARE IN MILLIMETERS.
2. DIMENSIONING AND TOLERANCING PER JEDEC MD-220.

REV.	DESCRIPTION	DATE	BY	APPD	TOLERANCES REFER TO SPECIFICATION ABOVE
A	ORIGINAL RELEASE.	Feb.5.2018	LILIN	HUANG	

UNIT:	SCALE:	SYMBOL
MM	NTS	

DESIGNED:	LILIN	DATE:	-
CHECKED:	-	DATE:	-
APPROVED:	-	DATE:	-
DWG. NO: UC-PO-44(T_SLP)7x7-5.20x5.20			


UNISEM CHENGDU CO., LTD.
 NO. 8-2 KENIN ROAD, WEST PARK OF CHENGDU HIGHTECH ZONE, CHENGDU, SICHUAN, PR CHINA 611731.

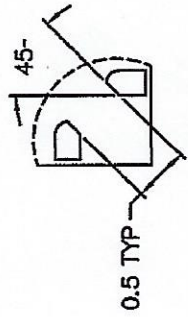
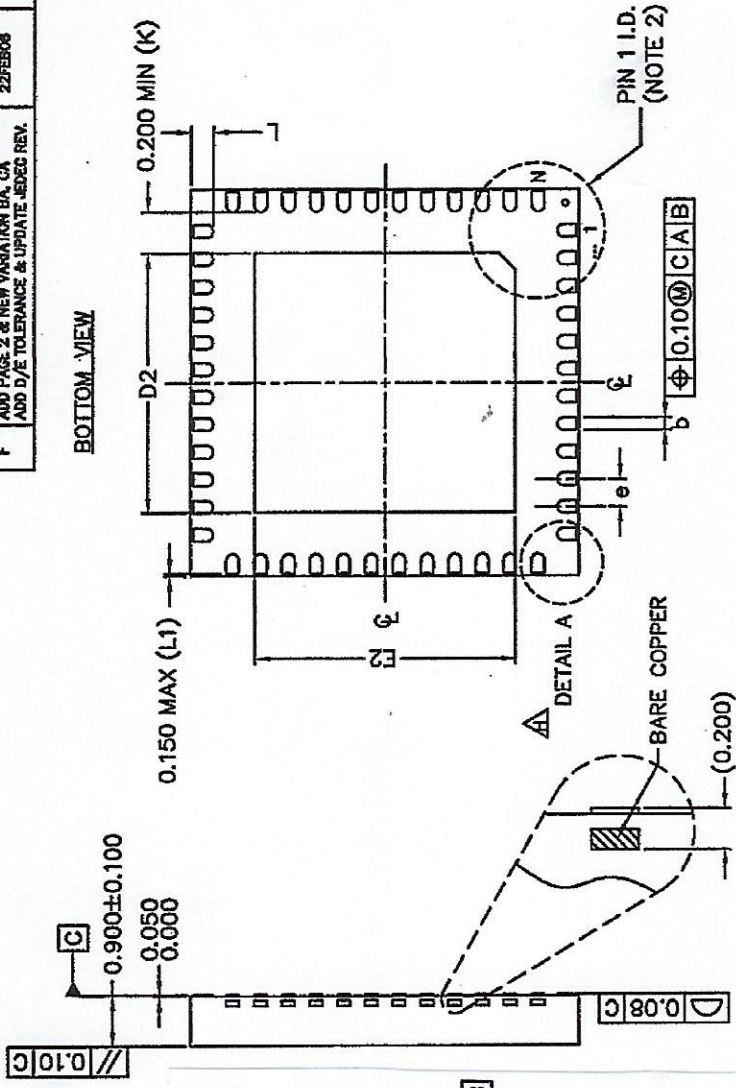
44L (T/SLP) 7x7 mm
 (PACKAGE OUTLINE)

REV.: A SHEET NO : 1 OF 1.

REV	DESCRIPTION	DATE	BY	INITIAL RELEASE	DATE	BY
G	CHANGE e & b DIMENSION OF CA (32L)	12APR06	ANANG/PD	A	13AUG02	ANANG/PD
H	ADD NOTE FOR CORNER LEADS ADD VARIATION "D1" AND CORRECT PN	04SEPT08	RICO/PD	B	07MAR03	ANANG/PD
				C	02MAR04	ANANG/PD
				D	23AUG04	ANANG/PD
				E	25APR05	ANANG/PD
				F	22FEB06	ANANG/PD

REV	DESCRIPTION	DATE	BY	INITIAL RELEASE	DATE	BY
A	ADD 4BL - BKG 4PAD REQUIREMENT COMPLETE DIMENSION & ADD NOTE/DETAIL B					
B	ADD (C) & CHANGE LF THICKNESS FR 0.25 REVISE TABLE, NOTE & PIN 1 I.D. OPTION					
C	REVISE VARIATION TABLE & TITLE DELETE NOTE 3 & DETAIL A					
D	ADD P/N ON AB & CHANGE DATUM SYMBOL					
E	ADD PAGE 2 & NEW VARIATION BA, CA					
F	ADD D/E TOLERANCE & UPDATE JEDEC REV.					

SYMBOL	VARIATION	BA	
		MIN	MAX
e	0.50 BSC		
b	0.18 0.25 0.30		
E2	5.55 5.65 5.75		
D2	5.55 5.65 5.75		
L	0.35 0.40 0.45		
N	44 LD		
ND	11		
NE	11		
JEDEC VARIATION	VKGD-3		
INTERNAL FEATURE	STANDARD		
PPF	N/A		
LF / AG SPOT	N/A		
P/N / AG RING	16-044-306		
PKG CODE	VQ 044		



DETAIL A
(Note 3)

- NOTE :
- DRAWING CONFORMS TO JEDEC REFERENCE MO-220 REVISION J.
 - PIN 1 I.D. CAN BE COMBINATION OF DOT AND/OR CHAMFER.
 - OPTIONAL CHAMFER ON CORNER LEADS. REFER TO ACTUAL PACKAGE.

	Jalan S. Purman Kav. 201 Batamindo Industrial Park, Muka Kuning Batam Island 29433, Indonesia. TEL: (62) 770-611988 FAX: (62) 770-611565
UNIT: MM DATE: 12/04/06 APPROVAL: RICO (Signature) CHECKED: MUSTANIR (Signature) APPROVED: DAVID (Signature) DESIGNED: DOGSON (Signature)	TITLE: 7x7x0.9 MM VQFN (PULL BACK LEAD) PACKAGE OUTLINE DRAWING DRAWING NO.: DG 8994 SCALE: DO NOT SCALE SHEET: 1 OF 2